

## DocuPen R700 Roller Calibration Procedures

The DocuPen is factory calibrated and there should be no need to re-calibrate. We advise you to recalibrate only if you experience poor scan quality, e.g. if your scanned image looks disproportionately stretched (or shrunk) then you need to calibrate the rollers. You can calibrate your DocuPen by either using the Paperport software or our stand-alone DocuPen Application. Both procedures are explained below:

### DocuPen R700 Roller Calibration Procedure using Paperport

**Note:** Before starting the calibration procedure please make sure that you have downloaded our **latest DocuPen PenTwain drivers**. You can download the drivers from the following link: <http://www.planon.com/drivers.php>

**Note:** In order to perform the Calibration you also need to print out the **Calibration sheet**. You can download the file from the DocuPen CD or from the same link: <http://www.planon.com/drivers.php>. Please print the **roller calibration** sheet on **normal** paper in **landscape** mode.

1. Connect the DocuPen to your computer using the USB cable.
2. Start the Paperport software. (Fig 1)
3. Press and hold the **left Shift and Ctrl keys** on your keyboard and then click the **Scan** button within the Paperport window. (Fig. 1) The **DocuPen Scanner Control** window will appear with the **Calibration** function enabled. (Fig. 2)
4. In the **DocuPen Scanner Control Window**, click on **Options** and select the **Calibration** function (Fig. 2). If you don't see the **Calibration** function please redo step 3.

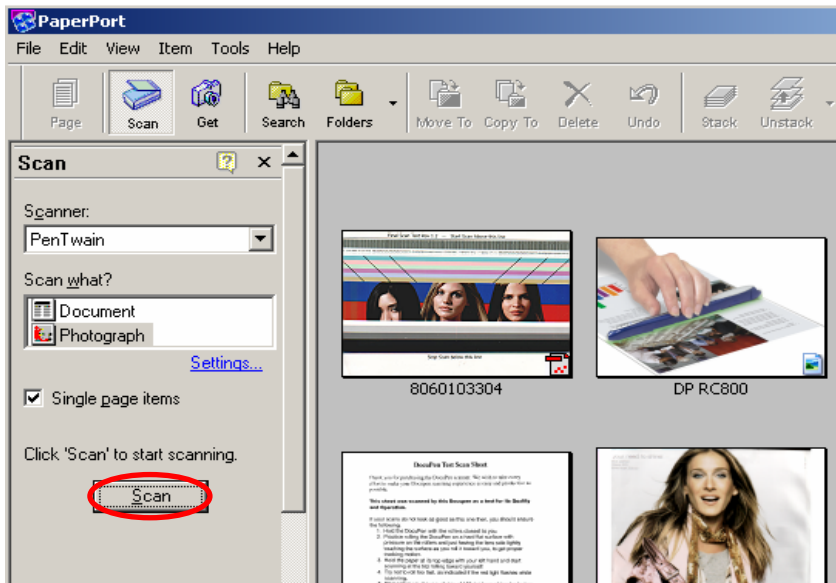


Fig 1

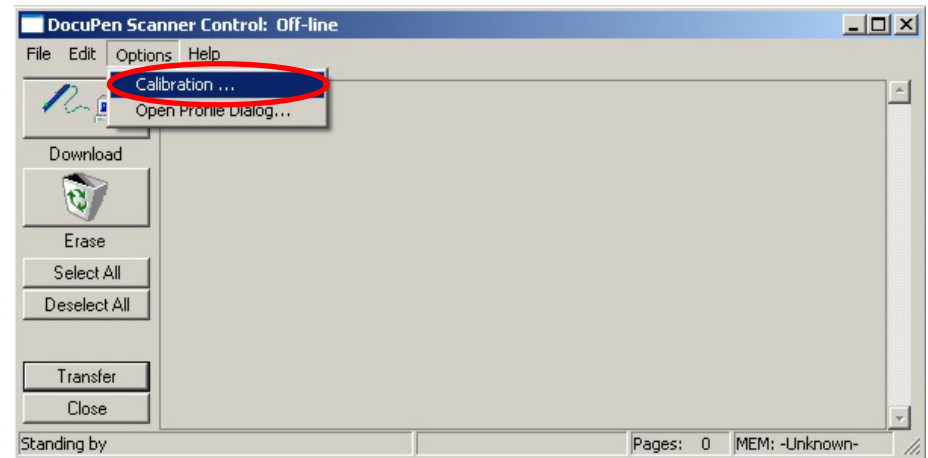


Fig 2

5. In the **Calibration Setup** dialog window – Select **Calibrate Roller** and confirm by clicking the **OK** button (Fig. 3).

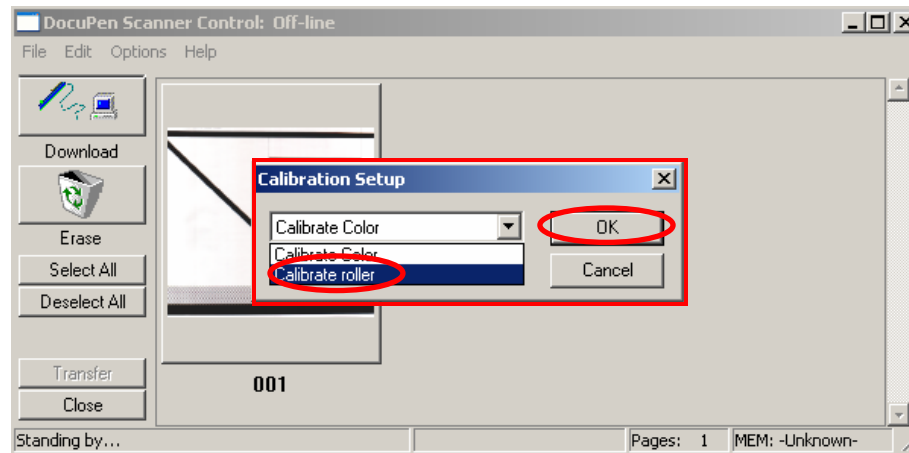


Fig 3

**NOTE:** The DocuPen memory will be formatted and all saved images will be lost.

6. You will be prompted to turn the DocuPen ON. Press the **Power On** button on your DocuPen and Click **OK** in the **PenTwain** Dialog window (Fig. 4).

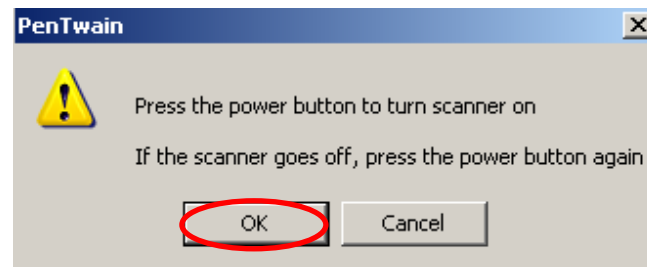


Fig 4

7. After the memory has been formatted the **Calibration scanning** dialog window will appear (Fig 5). Please **disconnect** the DocuPen from the USB cable and position it on top of the **Roller Calibration** sheet. Please scan the sheet in **high resolution (200 dpi)**.

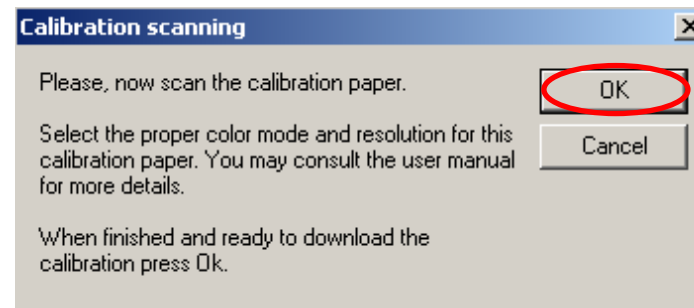


Fig 5

8. The DocuPen will now save the Calibration image into memory. After the image is saved, please attach the DocuPen to the USB cable. Now press the **Power ON** button on the DocuPen and click the **OK** button within the **Calibration scanning** dialog window (Fig 5).
9. The **Calibration result** dialog window will appear. You should see the roller calibration values to the left. If the accuracy is within 96-104%, you have successfully calibrated the rollers! (Fig 6).

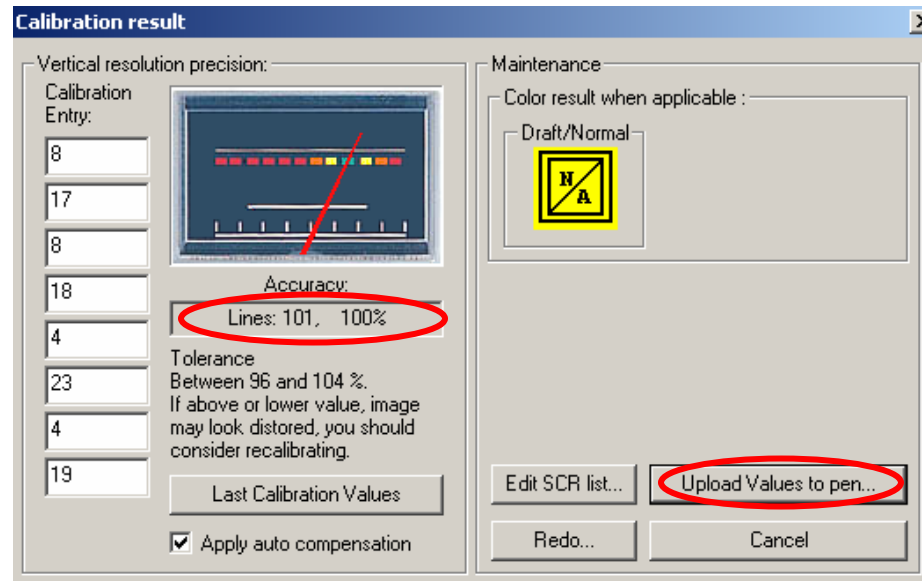


Fig 6

10. Finally, click **Upload Values to pen** button in the **Calibration result** dialog window to send the calibration result to the DocuPen. You will be prompted to turn the DocuPen ON. Press the **Power ON** button on the DocuPen and click OK in the dialog window – this will store the new values.

**You have successfully recalibrated your DocuPen!**

**In case you have any questions or need further assistance don't hesitate to contact our Customer care:**

**docupensupport@planon.com**  
**TOLL FREE 1-877- DOCUPEN (1- 877- 362 87 36)**

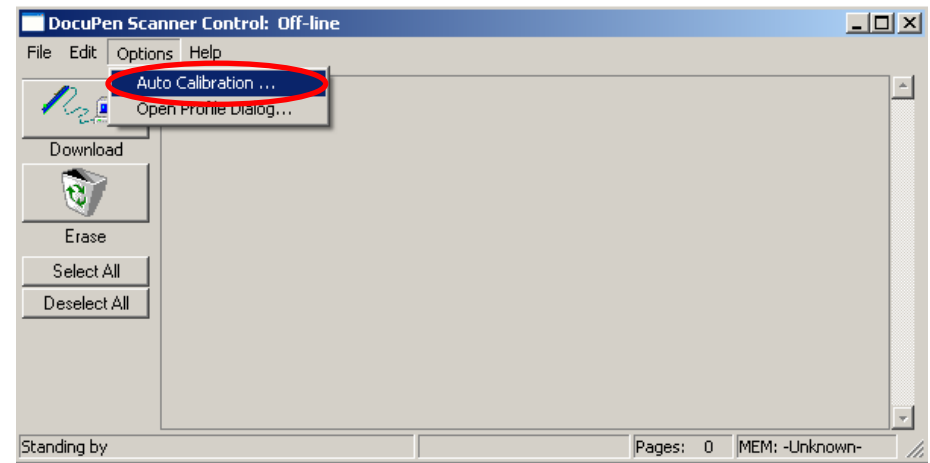
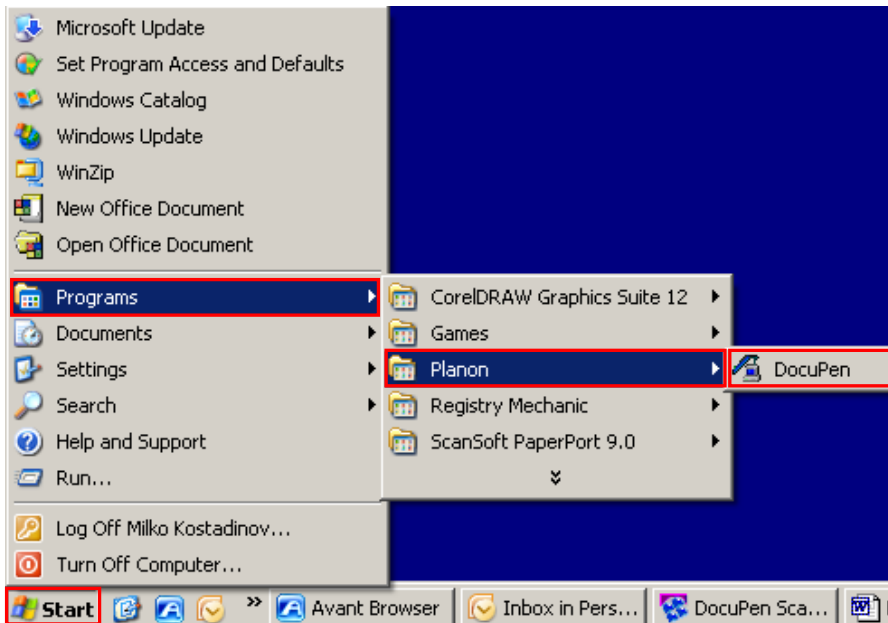
**Planon System Solutions Inc**  
**5155 Spectrum Way, Unit 15**  
**Mississauga, ON L4W 5A1, Canada**  
**Phone ++1 905 507 39 26 Fax ++1 905 624 66 29**  
**E-mail: support@planon.com**  
**Website: www.planon.com**

## DocuPen R700 Roller Calibration Procedure using the stand-alone DocuPen Application

**Note:** Before starting the calibration procedure please make sure that you have downloaded our **latest DocuPen PenTwain drivers** and **DocuPen Application**. You can download from the following link: <http://www.planon.com/drivers.php>

**Note:** In order to perform the Calibration you also need to print out the **Calibration sheet**. You can download the file from the DocuPen CD or from the same link: <http://www.planon.com/drivers.php>. Please print the **roller calibration** sheet on **normal** paper in **landscape** mode.

1. Connect the DocuPen to your computer using the USB cable.
2. Start the **DocuPen Application** with the **Calibration** function enabled – You can start the **DocuPen Application** by clicking on the **Start** button of your Windows Operating System then select **Programs**, then **Planon**. Now press and hold the **left Shift and Ctrl keys** on your keyboard and then click on **DocuPen** (Fig. 1) The **DocuPen Scanner Control** window will appear with the **Calibration** function enabled. (Fig. 2)
3. In the **DocuPen Scanner Control** window, click on **Options** and select the **Auto Calibration** function (Fig. 2). If you don't see the **Auto Calibration** function please redo step 2.



4. In the **Calibration Setup** dialog window – Select **Calibrate Roller** and confirm by clicking the **OK** button (Fig. 3).

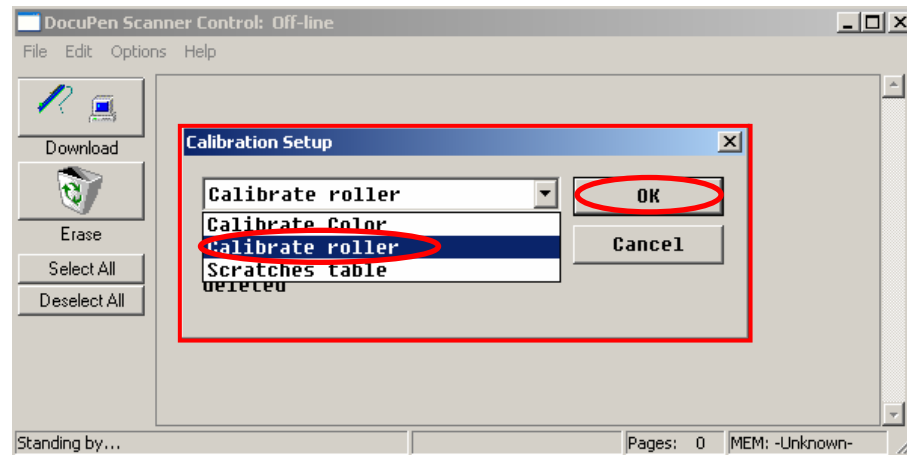


Fig 3

**NOTE:** The DocuPen memory will be formatted and all saved images will be lost.

5. You will be prompted to turn the DocuPen ON. Press the **Power On** button on your DocuPen and Click **OK** in the **PenTwain** Dialog window (Fig. 4).

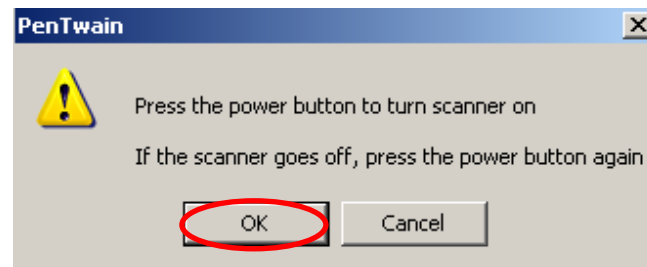


Fig 4

6. After the memory has been formatted the **Calibration scanning** dialog window will appear (Fig 5). Please **disconnect** the DocuPen from the USB cable and position it on top of the **Roller Calibration** sheet. Please scan the sheet in **high resolution (200 dpi)**.

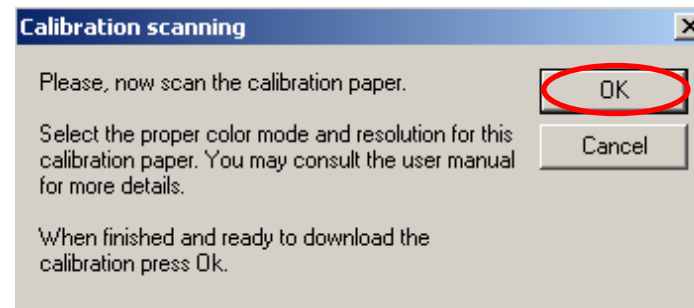


Fig 5

- The DocuPen will now save the Calibration image into memory. After the image is saved, please attach the DocuPen to the USB cable. Now press the **Power ON** button on the DocuPen and click the **OK** button within the **Calibration scanning** dialog window (Fig 5).
- The **Calibration result** dialog window will appear. You should see the roller calibration values to the left. If the accuracy is within 96-104%, you have successfully calibrated the rollers! (Fig 6).

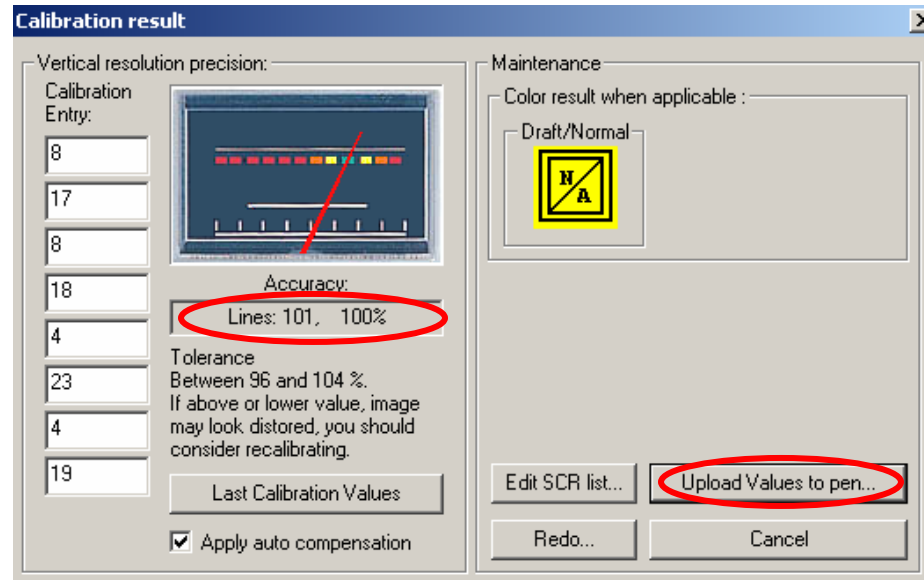


Fig 6

- Finally, click **Upload Values to pen** button in the **Calibration result** dialog window to send the calibration result to the DocuPen. You will be prompted to turn the DocuPen ON. Press the **Power ON** button on the DocuPen and click OK in the dialog window – this will store the new values.

**You have successfully recalibrated your DocuPen!**

**In case you have any questions or need further assistance don't hesitate to contact our Customer care:**

**docupensupport@planon.com**  
**TOLL FREE 1-877- DOCUPEN (1- 877- 362 87 36)**

**Planon System Solutions Inc**  
**5155 Spectrum Way, Unit 15**  
**Mississauga, ON L4W 5A1, Canada**  
**Phone ++1 905 507 39 26 Fax ++1 905 624 66 29**  
**E-mail: support@planon.com**  
**Website: www.planon.com**